



Shaping the future of design

Longevity, shock resistance and achieving an extremely high load bearing capacity whilst maintaining a high level of flexibility – architects and planners consider the technical, economical and aesthetic aspects of all of these factors when deciding between using steel or aluminium. We have the expertise and production capabilities to meet your precise individual requirements.

Longevity
Shock Resistance
High Load Bearing Capacity
Flexibility
Aesthetics
Thermal Resistance



OUR CAPABILITIES

We welcome the opportunity to share our extensive experience in system development. To date we have produced more than 3,000 different cross sections for the residential and industrial technology sector alone. We develop these complex cross sections in collaboration with our customers by selecting the most suitable combination of proven and modern production techniques:

- Application of the latest punching technology allows us to meet a diverse range of requirements. Examples include the incorporation of channels to accommodate screws for corner joints, installation of guide tracks or channelling for draining rainwater
- Precision saw cutting reduces the need for further processing
- Precision manufacturing on our laser cutting lines performing operations such as making openings to accommodate locks on PVC doors
- Welsers' highly economical patented joining technology



The required load bearing capacity is achieved whilst maintaining an attractive visual appearance.



Weather-proofing is required on window sections.



WHY WELSER?

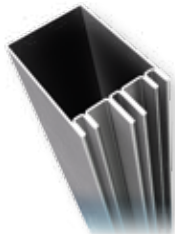
- **Complex cross sections** manufactured in a **variety of material grades** and **thicknesses**
- Steel benefits from an elasticity modulus three times greater than aluminium (that means lower deflection under greater loads) → the larger spans achieved are an advantage, particularly in the façade industry where larger panes of glass can be installed
- **Thermal expansion coefficient** of steel marginally greater than glass → expansion joints are no longer required
- Processing of pre-machined stainless steel with highly decorative visible surfaces → subsequent machining of the surface is no longer necessary
- High quality surface finishes provide optimum conditions for any **subsequent coatings** including chrome plating
- First class products in terms of **dimensional stability, strength, straightness** and **torsion**
- Precision engineering producing crack-free surfaces simplifying the **installation of fittings**
- Realisation of even **the most challenging hole-punching designs** achieving a high level of modularity and flexibility whilst maintaining a high degree of tolerance accuracy
- **Wide range** of doors, gates, windows, facades etc. available through synergies with our subsidiary company
- Short turnaround time and optimisation of the strip thickness integrated into the roll forming process using **tooling manufactured in-house**
- **Economical manufacturing process** capable of producing large batch quantities of highly complex sections on bespoke roll forming lines in a minimum number of production stages
- **Well-structured logistics package** including packaging designed to meet customers' requirements



Awning tubes must be corrosion resistant and functional.



Fence posts made by Welser are stable and weatherproof.



INFO – Welser Profile

- Manufacturer of bespoke sections and tubes made from steel, stainless steel and non-ferrous metals
- Family organisation currently in its 11th generation
- More than 19,000 different profiles produced to date
- Total manufacturing area 420,000m²
- Approx. 1,750 employees
- 3 production sites
- 12 sales offices