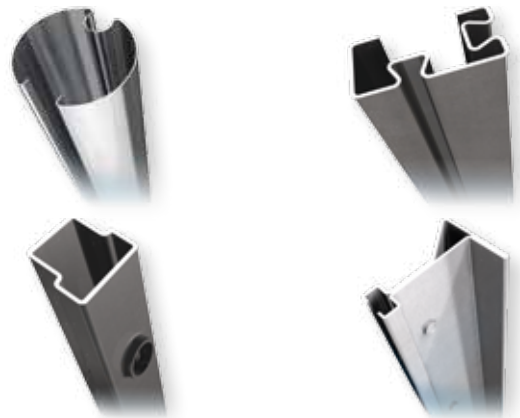




Versatile, resource-conserving and optimised to meet the requirements of your specific application

An optimal choice of materials, high level of corrosion resistance, the tightest tolerances possible concerning bending, torsion and camber – this combined with the conscious use of natural resources characterises Welsers sections used in environmental technology. We consider the environmental impact of our products through the complete supply chain from pre-material to manufacturing to transport logistics. Our active participation in conserving the environment, our industry experience and our competence in cold roll forming make us a strong partner for the wastewater and exhaust air treatment industries, the solar industry and more.

Corrosion Resistant
Versatile
Dimensionally Accurate
Weight Saving
Easy To Assemble
Weatherproof



OUR CAPABILITIES

We welcome the opportunity to share our extensive experience in system development. We develop complex cross sections in collaboration with our customers by selecting the most suitable combination of proven and modern production techniques.



Photovoltaic structures require sections offering a long service life, which are easily assembled.

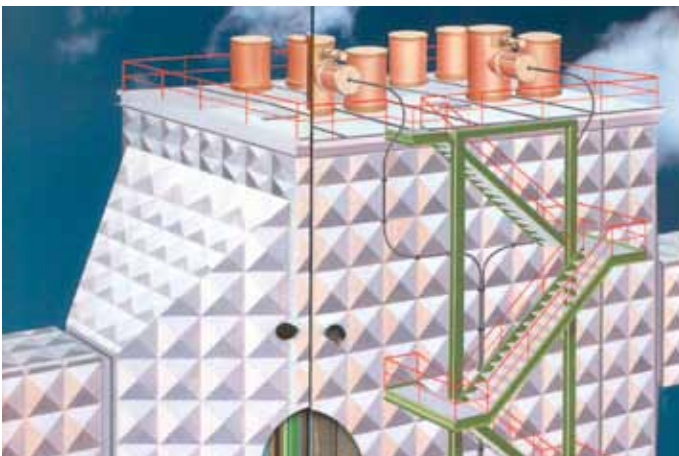


The most suitable material is selected based on application requirements.

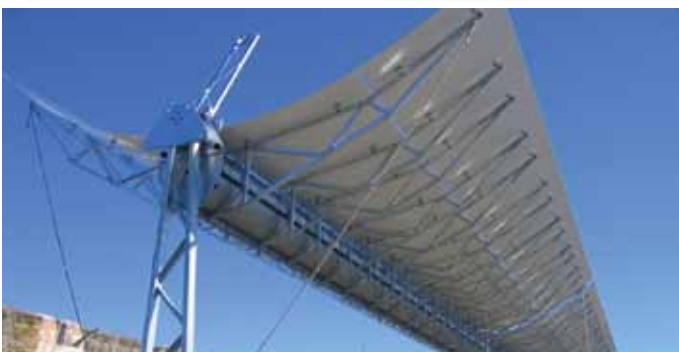


WHY WELSER?

- Meeting quality requirements relating to the **straightness** and **torsion** of filter plates up to 1.6m in length
- **Secure packaging** in containers produced in-house
- Optimisation of the roll forming process using **tooling manufactured in-house**
- Economical production of associated discharge electrodes combined with **intricate roll forming and punching techniques**
- **Optimised production process** including all holes, embossings and ready to use riveted plates



It is essential that filter plates are capable of holding an electric charge in order to guarantee dust attraction. This can only be made possible by selecting the most suitable material.



Sections for solar thermal power plants should not only be able to withstand heavy loads, but also be easy to maintain.



Corrosion resistance and longevity are top of the list of requirements in the wastewater treatment industry.

INFO – Welsers Profile

- Manufacturer of bespoke sections and tubes made from steel, stainless steel and non-ferrous metals
- Family organisation currently in its 11th generation
- More than 19,000 different profiles produced to date
- Total manufacturing area 420,000m²
- Approx. 1,750 employees
- 3 production sites
- 12 sales office